

Scan the code
below to visit
our website!



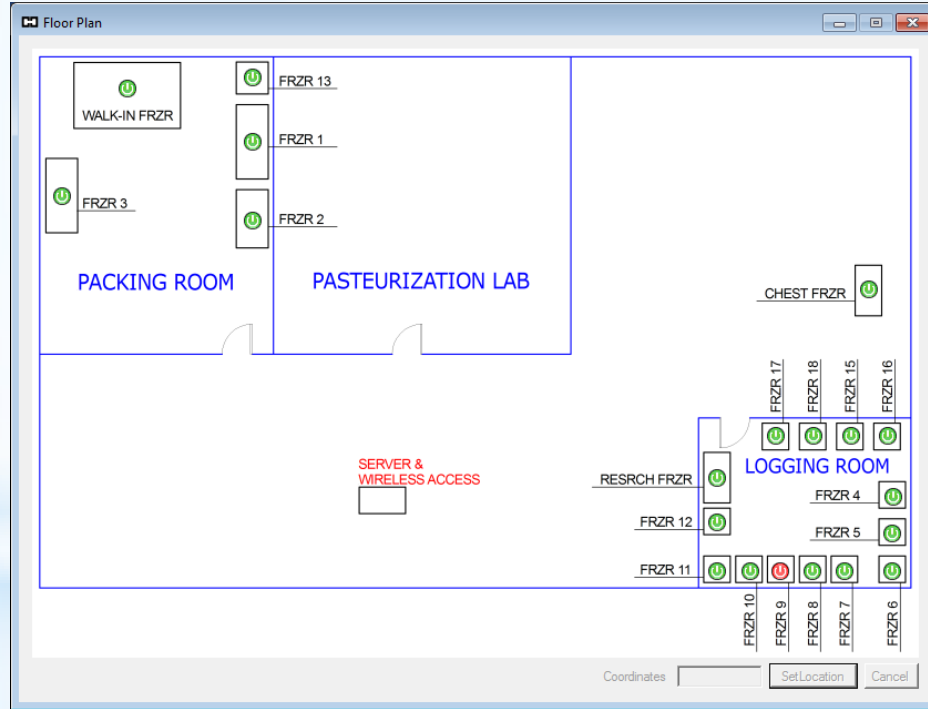
HAMPSHIRE CONTROLS CORP. ALERT MONITORING SYSTEM

<http://www.hampshirecontrols.com>



Alert Monitoring System

SAMPLE FLOOR PLAN - Icons show monitored points and status.





Alert Monitoring System

System Status Screen listing all pertinent information for each monitored location.

T*Sentry ALERT System ('admin' is logged in)

Sensor ID	Name	Contact	Address	Units	Data	Set Lo	Set Hi	Status
CHEST	Chest Freezer	Group:Default	IP: 10.20.30.67	°C	-15.3	-50.0	0.0	S___; Delay: 0/30; Log: all
CHST2	Chest Freezer 2	Group:Default	IP: 10.20.30.68	°C	-19.3	-50.0	0.0	S___; Delay: 0/15; Log: all
FRZ01	Freezer 1	Group:Default	IP: 10.20.30.1	°C	-26.2	-50.0	0.0	S___; Delay: 0/30; Log: all
FRZ02	Freezer 2	Group:Default	IP: 10.20.30.2	°C	-26.4	-50.0	0.0	S___; Delay: 0/30; Log: all
FRZ03	Freezer 3	Group:Default	IP: 10.20.30.3	°C	-25.1	-50.0	0.0	S___; Delay: 0/30; Log: all
FRZ04	Freezer 4	Group:Default	IP: 10.20.30.4	°C	-25.0	-50.0	0.0	S___; Delay: 0/30; Log: all
FRZ05	Freezer 5	Group:Default	IP: 10.20.30.5	°C	-24.0	-50.0	0.0	S___; Delay: 0/30; Log: all
FRZ06	Freezer 6	Group:Default	IP: 10.20.30.6	°C	-23.0	-50.0	0.0	S___; Delay: 0/30; Log: all
FRZ07	Freezer 7	Group:Default	IP: 10.20.30.7	°C	-23.0	-50.0	0.0	S___; Delay: 0/30; Log: all
FRZ08	Freezer 8	Group:Default	IP: 10.20.30.8	°C	-25.4	-50.0	0.0	S___; Delay: 0/30; Log: all
FRZ09	Freezer 9	Group:Default	IP: 10.20.30.9					Sensor is OFFLINE.
FRZ10	Freezer 10	Group:Default	IP: 10.20.30.10	°C	-19.8	-50.0	0.0	S___; Delay: 0/30; Log: all
FRZ11	Freezer 11	Group:Default	IP: 10.20.30.11	°C	-16.3	-50.0	0.0	S___; Delay: 0/30; Log: all
FRZ12	Freezer 12	Group:Default	IP: 10.20.30.12	°C	-26.2	-50.0	0.0	S___; Delay: 0/30; Log: all
FRZ13	Freezer 13	Group:Default	IP: 10.20.30.13	°C	-18.2	-50.0	0.0	S___; Delay: 0/30; Log: all
FRZ15	Freezer 15	Group:Default	IP: 10.20.30.15	°C	-16.3	-50.0	0.0	S___; Delay: 0/30; Log: all
FRZ16	Freezer 16	Group:Default	IP: 10.20.30.16	°C	-24.0	-50.0	0.0	S___; Delay: 0/30; Log: all
FRZ17	Freezer 17	Group:Default	IP: 10.20.30.17	°C	-23.9	-50.0	0.0	S___; Delay: 0/30; Log: all
FRZ18	Freezer 18	Group:Default	IP: 10.20.30.18	°C	-15.1	-50.0	0.0	S___; Delay: 0/30; Log: all
REF6B	Fridge 6B	Group:Default	IP: 10.20.30.107					Sensor is OFFLINE.
RSRCH	Research Freezer	Group:Default	IP: 10.20.30.82	°C	-23.5	-50.0	0.0	S___; Delay: 0/30; Log: all
WLKIN	Walk-in Freezer	Group:Default	IP: 10.20.30.87	°C	-23.0	-50.0	0.0	S___; Delay: 0/30; Log: all

Database Validation Alarms: 0 Warnings: 0 Offline: 2 Total:22 Alarm/Offline

Sensor: Add Edit Delete On Off Alarm Mute View Data Set Location

Monitor: Reports Event Log Floor Plan User List Contact List Settings

Help Log out





Alert Monitoring System

User-defined customization of monitored point information.

Sensor Information

Interface

IP IP Address

Serial Station/Zone Channel

Serial Customizations

0.1° Resolution Door switch, alarm on open Enable alarm

1.0° Resolution Door switch, alarm on closed Alarm delay

Data

Unit ID

Current Data

Alarm Low

Alarm High

Data Units

Serial Units: °C °F

Log:

Take Sensor Offline
Sensor is online.

Alarms

Alarm delay source: Delays set in software Delays set in hardware

Enable low data alarm Enable high data alarm Override hardware alarm limits

Delays: Low/high alarm Comm. fault alarm Retransmit notification

Description

Sensor Name Asset Tag/Serial #

Location

Description

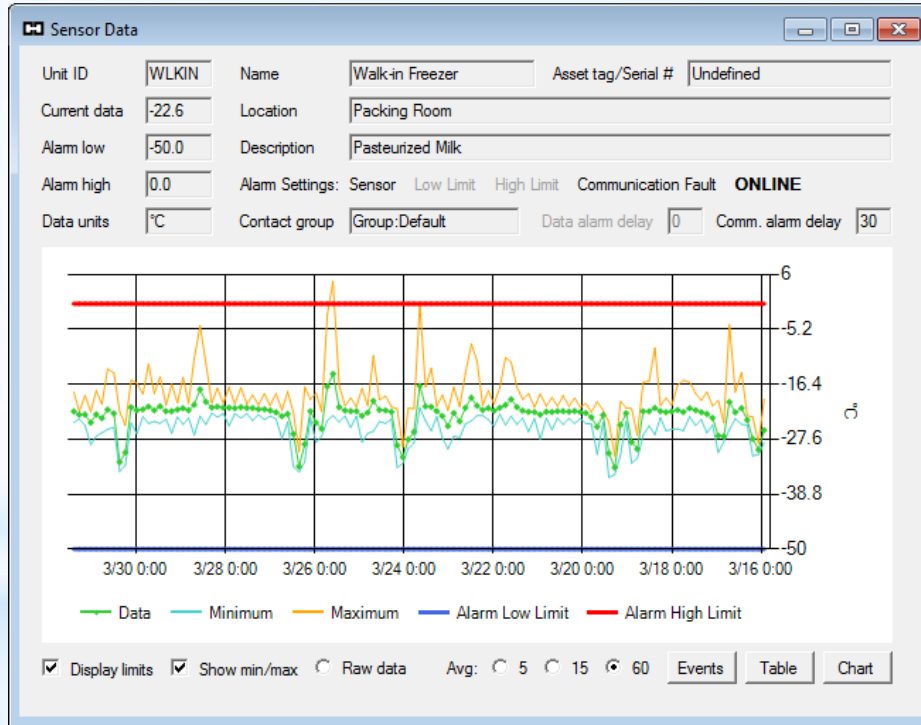
Contact Group





Alert Monitoring System

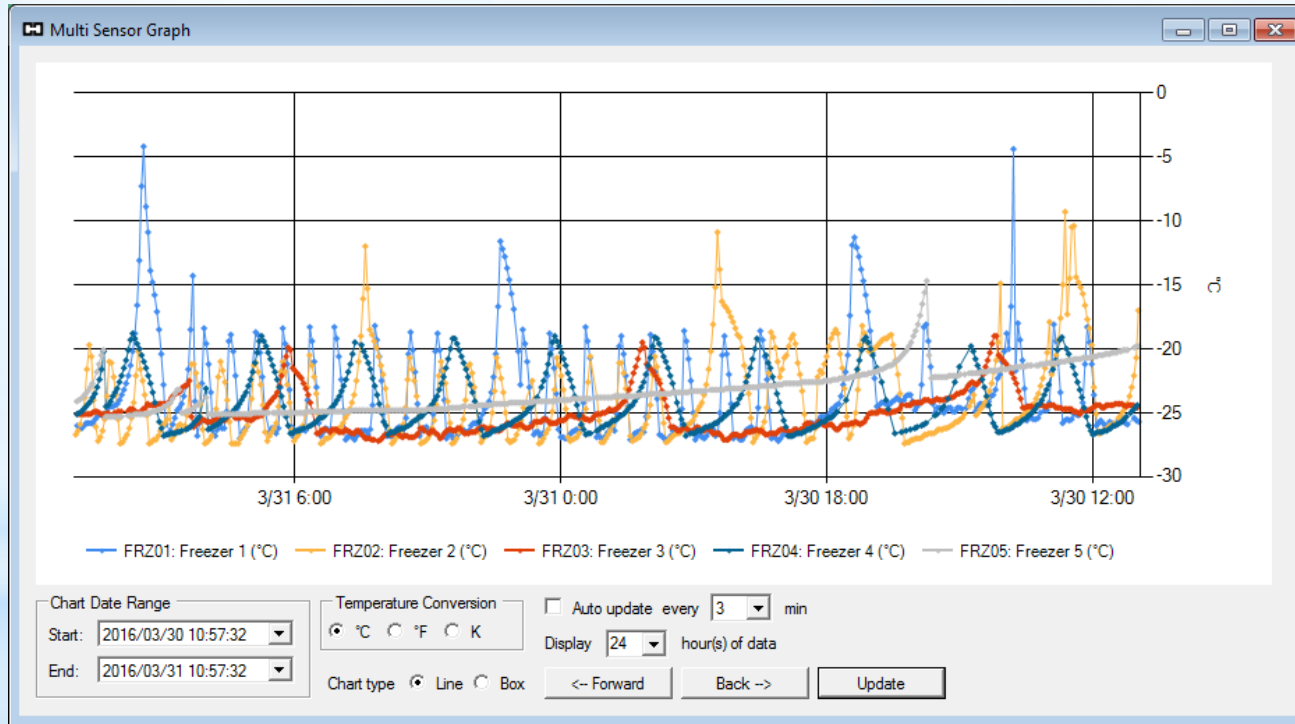
Graph of a single sensor over 15 days.





Alert Monitoring System

Graph of multiple sensors over a 24 hour period.





Alert Monitoring System

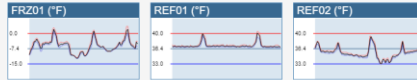
Sample Company Daily Temperature Report

Report generated: 2016/03/26 06:00 PDT
Report period: 2016/03/25 06:00 PDT to 2016/03/26 06:00 PDT

CURRENT READINGS

Unit	Name	Data	Low	High Status
FRZ01	Freezer	-10.8 °F	-15.0	0 0
REF01	Cooler 1	36.9 °F	33.0	40 0
REF02	Cooler 2	36.6 °F	33.0	40 0

CHARTS



STATISTICAL DATA

FRZ01 - Freezer (°F)							
Readings:	464	Mean:	-5.9	Std. Dev:	3.309	MKT:	-5.4
Min:	-12.3	Minimum occurred:	2016/03/25 19:32 PDT				
Max:	3.7	Maximum occurred:	2016/03/25 08:30 PDT				
REF01 - Cooler 1 (°F)							
Readings:	467	Mean:	37.1	Std. Dev:	0.631	MKT:	37.2
Min:	36.7	Minimum occurred:	2016/03/26 04:09 PDT				
Max:	40.5	Maximum occurred:	2016/03/25 11:03 PDT				
REF02 - Cooler 2 (°F)							
Readings:	488	Mean:	35.4	Std. Dev:	1.302	MKT:	35.5
Min:	32.7	Minimum occurred:	2016/03/25 15:36 PDT				
Max:	39.4	Maximum occurred:	2016/03/25 17:43 PDT				

EVENT LOG

Time	Unit	User ID (Name)	Event	Data	Limit	Duration
2016/03/25 08:12 PDT	FRZ01		Notice: Above high limit	0.3	0.0	
2016/03/25 08:42 PDT	FRZ01		ALARM: Above HIGH limit	1.1	0.0	30
2016/03/25 08:46 PDT	FRZ01		RECOVERY: From HIGH	-1.1	0.0	34
2016/03/25 15:35 PDT	FRZ01		Notice: Above high limit	0.0	0.0	
2016/03/25 16:03 PDT	FRZ01		Recovery: From HIGH	-0.4	0.0	27
2016/03/26 00:11 PDT	FRZ01		Notice: Above high limit	0.0	0.0	
2016/03/26 00:41 PDT	FRZ01		ALARM: Above HIGH limit	1.2	0.0	30
2016/03/26 00:45 PDT	FRZ01		RECOVERY: From HIGH	-0.9	0.0	34
Time	Unit	User ID (Name)	Event	Data	Limit	Duration
2016/03/25 10:54 PDT	REF01		Notice: Above high limit	40.1	40.0	
2016/03/25 11:10 PDT	REF01		Recovery: From HIGH	39.7	40.0	15
2016/03/25 23:03 PDT	REF01		Notice: Above high limit	40.1	40.0	
2016/03/25 23:12 PDT	REF01		Recovery: From HIGH	39.8	40.0	9
Time	Unit	User ID (Name)	Event	Data	Limit	Duration
2016/03/25 15:26 PDT	REF02		Notice: Below low limit	33.0	33.0	
2016/03/25 15:42 PDT	REF02		Recovery: From LOW	33.2	33.0	16

No system event log entries

Sample Daily Report complete with current readings, charts, statistical data and log of events.





Alert Monitoring System

Data Log

NOTE: All data log temperatures are in units of °C

Time	Sensor	Data	Low	High
2016/03/31 10:06:15	WLKIN	-21.6	-50.0	0.0
2016/03/31 10:09:12	WLKIN	-23.5	-50.0	0.0
2016/03/31 10:12:10	WLKIN	-21.5	-50.0	0.0
2016/03/31 10:15:08	WLKIN	-22.9	-50.0	0.0
2016/03/31 10:18:06	WLKIN	-22.6	-50.0	0.0
2016/03/31 10:21:04	WLKIN	-21.4	-50.0	0.0
2016/03/31 10:24:02	WLKIN	-23.7	-50.0	0.0
2016/03/31 10:27:00	WLKIN	-21.9	-50.0	0.0
2016/03/31 10:29:58	WLKIN	-22.6	-50.0	0.0
2016/03/31 10:32:56	WLKIN	-23.0	-50.0	0.0
2016/03/31 10:35:54	WLKIN	-21.3	-50.0	0.0
2016/03/31 10:38:52	WLKIN	-23.6	-50.0	0.0
2016/03/31 10:41:50	WLKIN	-22.2	-50.0	0.0
2016/03/31 10:44:47	WLKIN	-21.9	-50.0	0.0
2016/03/31 10:47:45	WLKIN	-23.4	-50.0	0.0
2016/03/31 10:50:43	WLKIN	-21.6	-50.0	0.0
2016/03/31 10:53:41	WLKIN	-23.0	-50.0	0.0
2016/03/31 10:56:39	WLKIN	-22.6	-50.0	0.0
2016/03/31 10:59:37	WLKIN	-21.3	-50.0	0.0

Filter by date Start: 2016/03/31 00:00:00 End: 2016/04/01 00:00:00 Update

Filter by Sensor WLKIN

CSV file name data_log.csv Export to CSV

Sample log of data for a single monitored point over a 24 hour period.





Alert Monitoring System

Sample screen of Event Log over a 24 hour period.

	Time	Unit ID	Name	Event	Data	Limit	Duration
▶	2016/03/24 00:00:16	PRGRM	Reporting	Report generated and sent.			
	2016/03/24 07:27:32	FRZ09		Notice: Above high limit	0.0	0.0	
	2016/03/24 07:30:32	FRZ09		Recovery: From HIGH	-5.3	0.0	3
	2016/03/24 07:30:32	FRZ09		Sensor is ONLINE and within limits			
	2016/03/24 08:00:15	PRGRM	Reporting	Report generated and sent.			
	2016/03/24 14:45:28	FRZ11		Notice: Above high limit	1.1	0.0	
	2016/03/24 14:51:39	FRZ11		Recovery: From HIGH	-0.2	0.0	6
	2016/03/24 14:51:39	FRZ11		Sensor is ONLINE and within limits			
	2016/03/24 15:17:50	FRZ18		Notice: Above high limit	1.5	0.0	
	2016/03/24 15:23:51	FRZ18		Recovery: From HIGH	-0.2	0.0	6
	2016/03/24 15:23:51	FRZ18		Sensor is ONLINE and within limits			
	2016/03/24 16:00:14	PRGRM	Reporting	Report generated and sent.			

Filter by date Start: End: **Filter by ID**

CSV file name





Alert Monitoring System

Sample text of e-mail alarm alert and recovery.

E-Mail Notifications

High Limit Alarm

From: [SMTP Username]
To: [Contact list address(es)]
Subject: ALARM! Above HIGH limit on: FRZ17 - Freezer 17
ALARM! Above HIGH limit on: FRZ17 - Freezer 17
Time of deviation: 10/7/2014 5:41:38 PM
Time of alarm: 10/7/2014 5:56:43 PM
Duration: 15 minutes
Current data: 1.5 Limit: 0.0

High Limit Recovery

From: [SMTP Username]
To: [Contact list address(es)]
Subject: RECOVERY. Data within limits on: FRZ17 - Freezer 17
RECOVERY. Data within limits on: FRZ17 - Freezer 17
Time of deviation: 10/7/2014 5:41:38 PM
Time of alarm: 10/7/2014 5:56:43 PM
Time of recovery: 10/7/2014 5:58:56 PM
Duration: 17 minutes
Current data: -0.4 Lo/Hi limits: -50.0/0.0





Alert Monitoring System

Remote LOGIN screen that requires User Name & Password

T°Sentry ALERT System

LOGIN

Please enter your credentials.

username

password

Login Password Reset





Alert Monitoring System

Remote Access Status Information Screen

The screenshot displays the T°Sentry ALERT System Status screen. At the top, there are three tabs: Dashboard, Status (which is selected and highlighted with a red border), and Reports. Below the tabs is a table with the following columns: Unit ID, Name, Contact, Address, Units, Data, Lo Limit, Hi Limit, and Status / Settings. The table lists 11 units, mostly freezers, with their respective IP addresses, temperatures, and limits. Unit FRZ09 is marked as OFFLINE. To the right of the table are two control panels. The 'Sensor Controls' panel includes buttons for Add, Edit, Delete, On, Off, Alarm Mute, View Data, and Set Location. The 'Monitor Controls' panel includes buttons for Reporting, Event Log, Floor Plan, User List, Contact List, and Settings.

Unit ID	Name	Contact	Address	Units	Data	Lo Limit	Hi Limit	Status / Settings
🟢 CHEST	Chest Freezer	Group:Default	IP: 10.20.30.67	°C	-14.9	-50.0	0.0	S__; Delay: 0/30; Log: all
🟢 CHST2	Chest Freezer 2	Group:Default	IP: 10.20.30.68	°C	-17.1	-50.0	0.0	S__; Delay: 0/15; Log: all
🟢 FRZ01	Freezer 1	Group:Default	IP: 10.20.30.1	°C	-26.5	-50.0	0.0	S__; Delay: 0/30; Log: all
🟢 FRZ02	Freezer 2	Group:Default	IP: 10.20.30.2	°C	-27.2	-50.0	0.0	S__; Delay: 0/30; Log: all
🟢 FRZ03	Freezer 3	Group:Default	IP: 10.20.30.3	°C	-25.0	-50.0	0.0	S__; Delay: 0/30; Log: all
🟢 FRZ04	Freezer 4	Group:Default	IP: 10.20.30.4	°C	-25.5	-50.0	0.0	S__; Delay: 0/30; Log: all
🟢 FRZ05	Freezer 5	Group:Default	IP: 10.20.30.5	°C	-24.3	-50.0	0.0	S__; Delay: 0/30; Log: all
🟢 FRZ06	Freezer 6	Group:Default	IP: 10.20.30.6	°C	-23.0	-50.0	0.0	S__; Delay: 0/30; Log: all
🟢 FRZ07	Freezer 7	Group:Default	IP: 10.20.30.7	°C	-23.7	-50.0	0.0	S__; Delay: 0/30; Log: all
🟢 FRZ08	Freezer 8	Group:Default	IP: 10.20.30.8	°C	-25.4	-50.0	0.0	S__; Delay: 0/30; Log: all
🔴 FRZ09	Freezer 9	Group:Default	IP: 10.20.30.9					Sensor is OFFLINE.
🟢 FRZ10	Freezer 10	Group:Default	IP: 10.20.30.10	°C	-19.8	-50.0	0.0	S__; Delay: 0/30; Log: all
🟢 FRZ11	Freezer 11	Group:Default	IP: 10.20.30.11	°C	-16.4	-50.0	0.0	S__; Delay: 0/30; Log: all





Alert Monitoring System

Remote Access to current status and report generation.

The screenshot shows a web browser window with the URL localhost:8888/reports.html. The page title is "T°Sentry ALERT System". There are three navigation buttons: "Dashboard", "Status", and "Reports". The "Reports" button is selected. Below the buttons is a table with three columns: "Name", "Size", and "Date Modified". The table contains 18 rows of report data.

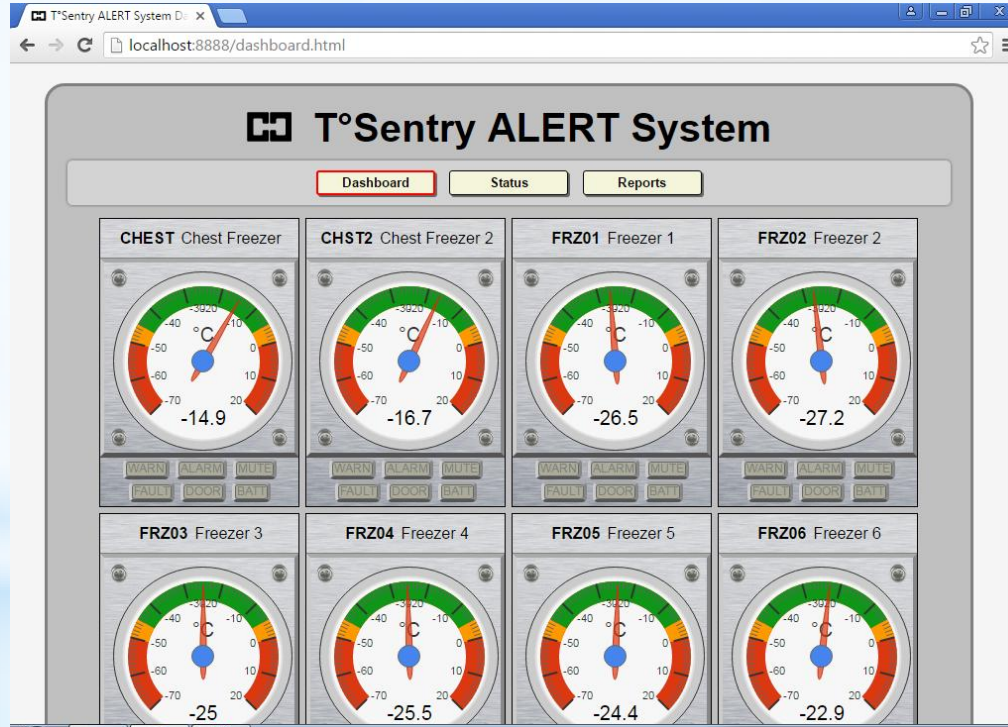
Name	Size	Date Modified
Report_20160331_0800_CDT_Periodic-8-hour.html	235.7 kB	2016/03/31 08:00
Report_20160331_0000_CDT_Periodic-8-hour.html	235.6 kB	2016/03/31 00:00
Report_20160330_1600_CDT_Periodic-8-hour.html	233.7 kB	2016/03/30 16:00
Report_20160330_0800_CDT_Periodic-8-hour.html	236.4 kB	2016/03/30 08:00
Report_20160330_0000_CDT_Periodic-8-hour.html	233.3 kB	2016/03/30 00:00
Report_20160329_1600_CDT_Periodic-8-hour.html	232.5 kB	2016/03/29 16:00
Report_20160329_0800_CDT_Periodic-8-hour.html	236.4 kB	2016/03/29 08:00
Report_20160329_0000_CDT_Periodic-8-hour.html	237.4 kB	2016/03/29 00:00
Report_20160328_1600_CDT_Periodic-8-hour.html	228.9 kB	2016/03/28 16:00
Report_20160328_0800_CDT_Periodic-8-hour.html	236.5 kB	2016/03/28 08:00
Report_20160328_0000_CDT_Periodic-8-hour.html	234.9 kB	2016/03/28 00:00
Report_20160327_1600_CDT_Periodic-8-hour.html	235.4 kB	2016/03/27 16:00
Report_20160327_0800_CDT_Periodic-8-hour.html	234.5 kB	2016/03/27 08:00
Report_20160327_0000_CDT_Periodic-8-hour.html	235.9 kB	2016/03/27 00:00
Report_20160326_1600_CDT_Periodic-8-hour.html	235 kB	2016/03/26 16:00
Report_20160326_0800_CDT_Periodic-8-hour.html	235.9 kB	2016/03/26 08:00
Report_20160326_0000_CDT_Periodic-8-hour.html	235.7 kB	2016/03/26 00:00





Alert Monitoring System

Remote Access View of all current conditions.





Alert Monitoring System



Mothers' Milk Bank Northeast
Share the Health

HAMPSHIRE CONTROLS CORP.
www.hampshirecontrols.com





Alert Monitoring System



Mothers' Milk Bank
— OF NORTH TEXAS —

HAMPSHIRE CONTROLS CORP.
www.hampshirecontrols.com





Alert Monitoring System

